

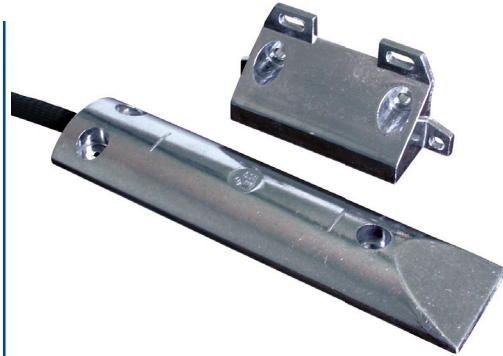
Magnetic contact for garage doors • Series 450

- Compliant with and certification pending in accordance with EN50131-2-6
- Floor mounting
- Die-cast aluminium housing
- Wire connection
- With anti-tampering wire loop
- Steel sheath



Aluminium magnetic contact for garage or sliding/folding doors. The strong housing construction of die-cast aluminium ensures maximum resistance under the wheels of heavy-load vehicles, fork-lift trucks etc., making it suitable for heavy-duty applications.

The reed part is fixed to the ground with three screws, while the magnet is mounted on the door (6 mounting holes available). Its long operating distances allow efficient operation also with doors of large gap.

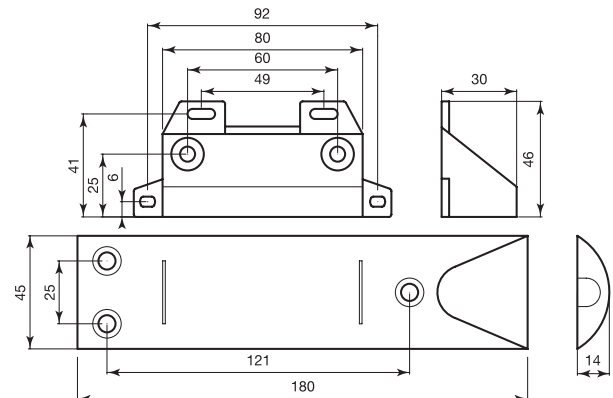


The reed section contains a tight reed bulb with polyurethane resin and an anti-tampering loop to reduce violation risks. Connection uses 4 wires (2 wires for NC contact with near magnet and 2 wires for anti-tampering), protected by a steel sheath, and covered by black PVC.

Contact 450-TFC-2 is magnetically balanced to reduce the risk of violation through an external magnet.

General specifications

Housing material	Die-cast aluminium
Operation	Reed contact with NC output with near magnet
Type of connection	Wires (2 for contact + 2 for anti-tampering)
Operating temperature	-25°C ÷ +55°C
IP Degree	IP 65
Standard equipment	Cable protection sheathing, 10 mm diameter, 1 m length, steel with black PVC coating; anti-tampering wires
Packaging	1 pc. / package



Order codes

Code	Y max/X max (no iron)	Y max (on iron)	Max voltage	Max current	Max power	N° wires	Cable length	Approvals	Safety grade	Environmental class	Package weight
450-CSA	35/25 mm	20 mm	200 Vdc	1 A	10 W	4	1,2 m	IMQ Liv. I* Vds G191589 Cl.B	2	3	0,24 Kg
450-FR	35/25 mm	20 mm	200 Vdc	1 A	10 W	4	1,2 m	NF A2P TYPE 3	3	4	0,19 Kg
450-TF-2	35/25 mm	20 mm	200 Vdc	1 A	10 W	4	2,0 m	IMQ Liv. I*	2	3	
450-TFC-2	13-18/16 mm	16 mm	100 Vdc	300 mA	3 W	4	2,0 m	Vds G198067 Cl.C	3	4	0,19 Kg

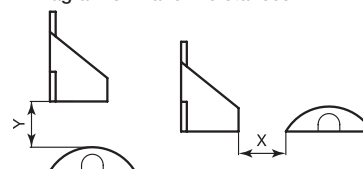
The "Safety grade" and "Environmental Class" are two new classifications introduced by the EN50131 regulation, for further information see on page 66.

Y max: maximum vertical installation distance; X max: maximum horizontal installation distance (see diagram below).

* IMQ approval for outdoor use

The indicated maximum voltage data refer to the reed bulbs inside the contacts. However the product must be used within the very low voltage limits (max. voltage 74 Vdc - 49 Vac)

Diagram of Y and X distances



Accessories available (see page 28)

AG-10 | Black PVC-coated steel sheath - 10 m